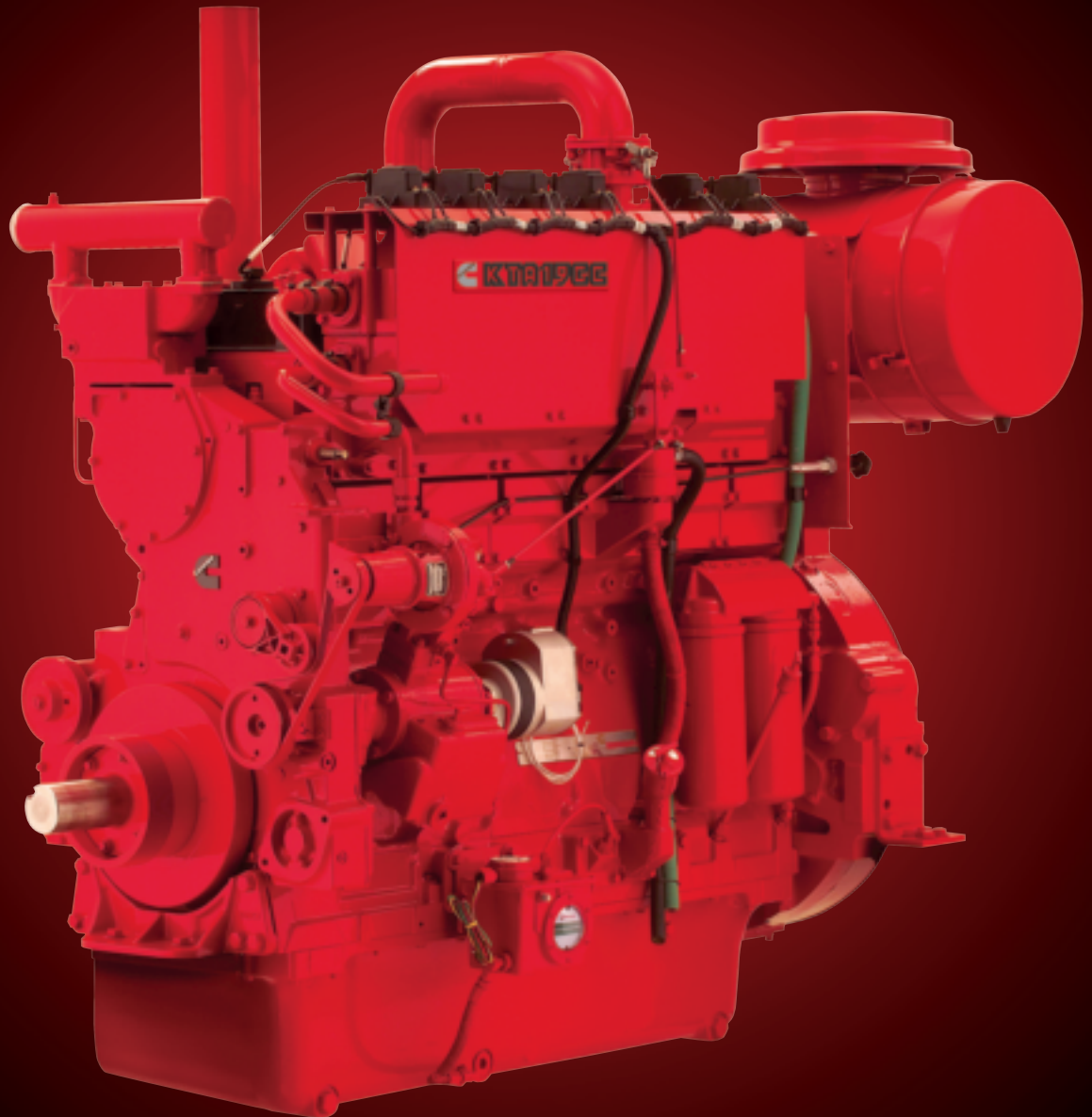




KTA19GC.

Natural Gas Engines For Gas Compression.



KTA19GC.

Cummins natural gas engines are designed and built to maximize uptime and minimize maintenance requirements. The combination of proven air/fuel handling, ignition and electronic engine controls functions as a seamless, integrated system, to deliver optimum application efficiency at the lowest cost.

Standard Features And Benefits.

Base engine – All major components, including block, crank, cam, lube, water pumps and gears, are common with the Cummins K19 diesel, a proven power plant with over 20 years of reliable and dependable service in a wide variety of industrial applications. Cylinder heads are designed for optimal intake air/exhaust flow. Pyromet® exhaust valve faces and Stellite® exhaust valve seat inserts, along with Tribaloy® T400 intake valve faces and valve seat inserts, add durability. The KTA19GC comes with a 1-year/unlimited-hours warranty.

Flywheel and flywheel housing – Cast iron, including provisions for 5/8-18 and/or 3/4-16 magnetic pickup, machined to accommodate starter mounting on either side of the housing.

Power Take-Off (PTO) – A front stub shaft is standard for driving the compressor cooler fan.

Air handling – The turbocharger design delivers maximum performance and life. It includes a factory-installed heavy-duty air cleaner.

Fuel system – An IMPCO Varifuel® carburetor provides stable operation and fuel tracking through all load ranges.

Speed control – The Woodward® hydraulic governor provides stable rpm control under all load conditions.

Ignition system – Features an Altronic® III magneto ignition. The Altronic CD200 ignition is also available as an option.

Starting system – The standard system features a robust Delco Remy® 39MT 24-volt starter with an SAE #3 mounting flange. A gas starter is optional.

Electrical system – Includes a 24-volt alternator.

Lubrication system – The deep, full-length, high-capacity oil pan provides extended drain intervals. Venturi™ Combo full-flow and bypass oil filters reduce maintenance costs while extending service intervals.

Cooling system – A two-pump/two-loop jacket-water cooling system with a gear-driven pump and separate thermostat-controlled aftercooling circuit maintains lower intake manifold temperatures. The integrated coolant filter adds corrosion protection.

Exhaust system – The water-cooled manifold reduces surface and exhaust gas temperatures.

KTA19GC Specifications.

In-Line, 6-Cylinder, 4-Cycle, Natural Gas.

Number of Cylinders	6	
Displacement	1,150 cu in	18.8 L
Bore and Stroke	6.25 in x 6.25 in	159 mm x 159 mm
Aspiration	Turbocharged and aftercooled	
Lube Oil Capacity	27 U.S. gal	102 L
Coolant Capacity	8 U.S. gal	30 L
Length	77.12 in	1,959 mm
Width	37.32 in	948 mm
Height	68.98 in	1,752 mm
Weight (Dry)	4,840 lb	2,195 kg

Ratings Gross Horsepower (Without Fan).

Engine Model	Continuous Rating hp @ rpm	
	C/R (Note)	1200 1800
KTA19GC420-Standard (1)	8.5:1	420
KTA19GC380-Catalyst (2, 3)	8.5:1	380
KTA19GC265-Catalyst (2, 3)	8.5:1	265

(1) This engine is not capable of meeting the EPA SI NSPS requirements and is offered only for use outside the U.S.

(2) Catalyst rating.

(3) Customer-Compliant Upgradeable – This engine is capable of operating with a Three-Way Catalyst at this rating. It is the responsibility of the owner/operator to upgrade the engine with an air/fuel ratio controller and a Three-Way Catalyst capable of meeting the SI NSPS regulations. The owner/operator is required to conduct site compliance testing and submit documentation per the EPA SI NSPS requirements.

Every Question. Answered.

Your Cummins distributor can provide you with additional details, answer questions and make recommendations for the best configuration of a Cummins KTA19GC engine for your gas compression needs. See cumminsengines.com to locate the distributor nearest you.

Pyromet is a registered trademark of Carpenter Steel Co. Stellite is a registered trademark of Deloro Stellite Holdings Co. Tribaloy is a registered trademark of E.I. du Pont de Nemours and Co. IMPCO Varifuel is a registered trademark of IMPCO Carburetion, Inc. Woodward is a registered trademark of Woodward Governor Co. Altronic is a registered trademark of Economy Engine Co. Delco Remy is a registered trademark of General Motors LLC.



Cummins Inc.
Box 3005
Columbus, IN 47202-3005
U.S.A.

Phone: 1-800-DIESELS™ (1-800-343-7357)
Fax: 1-800-232-6393
Internet: cumminsengines.com
Twitter.com/CumminsEngines
YouTube.com/CumminsEngines

Bulletin 4087343 Printed in U.S.A. 4/14
©2014 Cummins Inc.